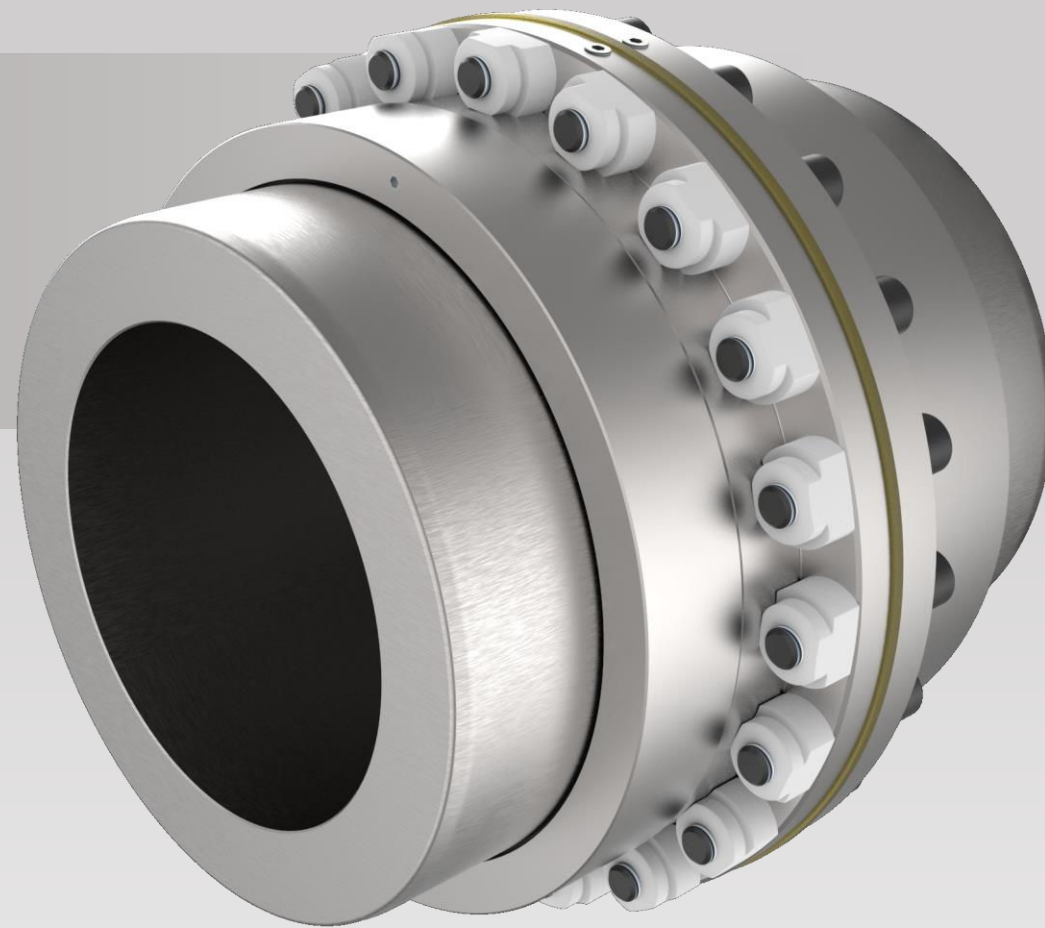




INSTALLATION AND MAINTENANCE INSTRUCTIONS

Electrically Insulated Couplings

Flexident Senior +I



Handling

Before handling the coupling, check that no current is flowing through the transmission line

Insulation class

Electrical insulation is designed to withstand voltage up to 5kVDC in test conditions with a controlled atmosphere. Total insulation performance achieved on the installation depends on care taken during assembly and the environment around the coupling. CMD is therefore not responsible for a lack in performance due to environmental conditions.



Disclaimer: the electrical insulation is provided in order to protect the transmission line and prevent potential damage to bearings and gears.

In any case it should not be used to avoid electrical hazard and human injuries

Coupling grease

Make sure to use a grease with a minimal dielectric strength of 30 kV/mm
Grease containing solid elements such as MoS₂ or graphite are not allowed

Recycling

Recycle in accordance with local regulations for each material

Waste grease or the coupling parts must be eliminated regarding the appropriate local laws and regulations

Steel: Flanges, Screws, Nuts, Hub

Fiberglass/ epoxy: Insulated washer, Insulated bushing, Insulated interface

PA12: Insulated nut cover

Acetal: Insulated centering ring



INSTALLATION AND MAINTENANCE INSTRUCTIONS

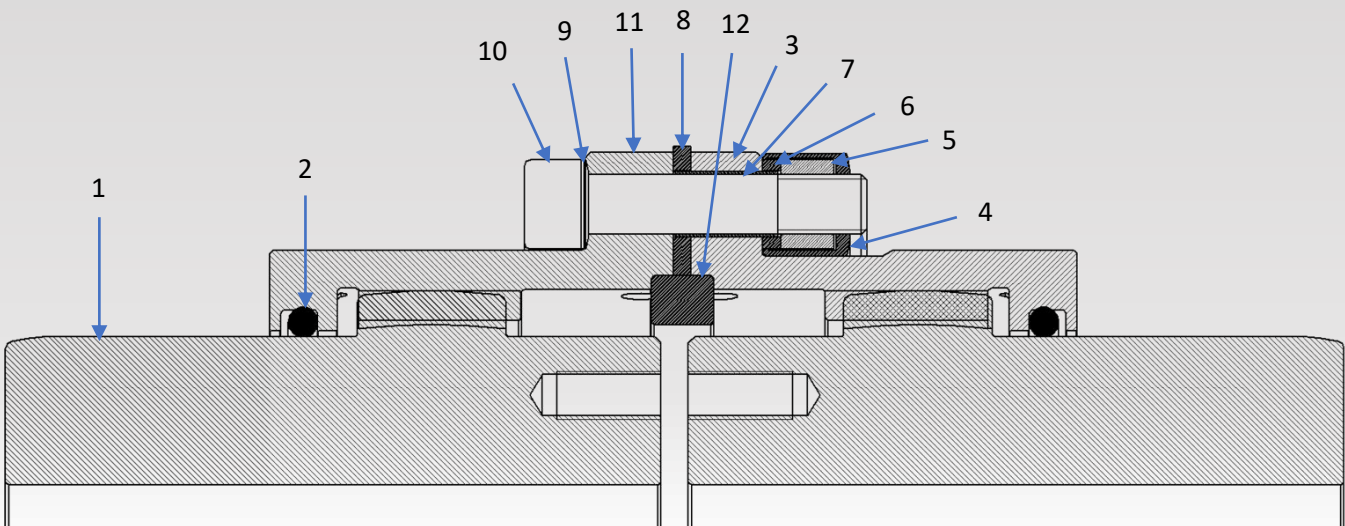
❑ Assembling

- To assemble the hubs, refer to the installation instructions of the couplings
- Before assembling, make sure to carefully clean and dry all the parts
- Secure the flanged sleeves by uniform tightening of all fasteners to the torque values “Cs” :

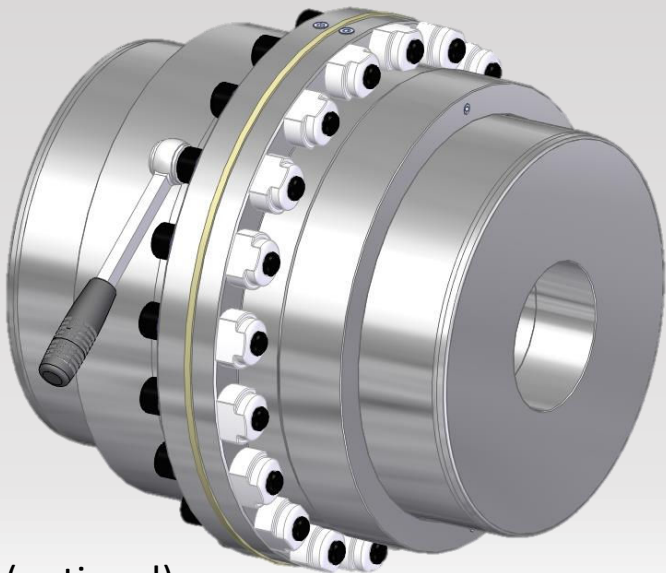
SENIOR	50	68	80	100	115	135	150	170	190	215	230	250	280	310	330	370	400	430	475	510	550	610	650	710	750	800
Cs (Nm)	14	33	60	60	95	171	235	235	370	370	520	520	520	800	1250	1650	1650	1650	2290	2290	4600	4600	8000	8000	9000	9500



The use of a dynamometric wrench is mandatory



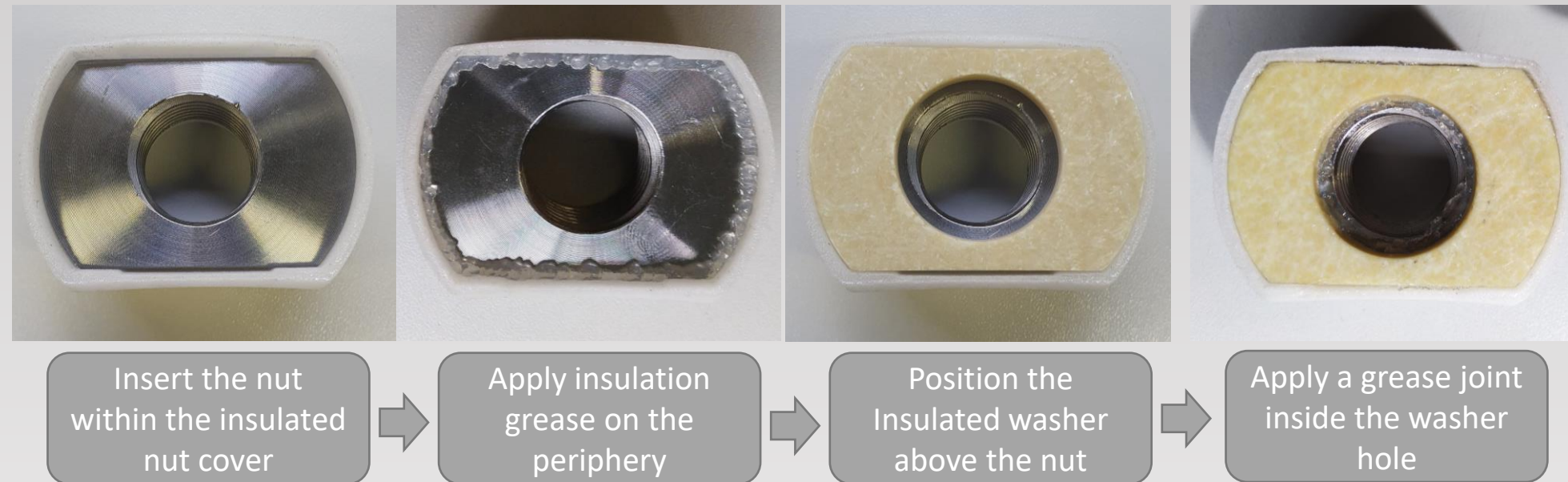
1. Hub
2. O-Ring
3. Special flange
4. Insulated nut cover
5. Nut
6. Insulated washer
7. Insulated bushing
8. Insulated interface
9. Washer
10. Screw
11. Standard flange
12. Insulated centering ring (optional)



INSTALLATION AND MAINTENANCE INSTRUCTIONS

❑ Nut assembling

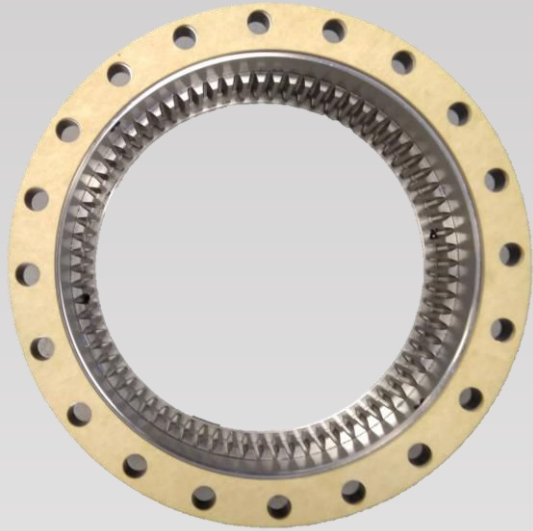
- Make sure that each component is clean and dry before mounting
- The insulation grease used should have a minimal dielectric strength of 30 kV/mm
- These operations must be followed carefully for each nut



INSTALLATION AND MAINTENANCE INSTRUCTIONS

Warning

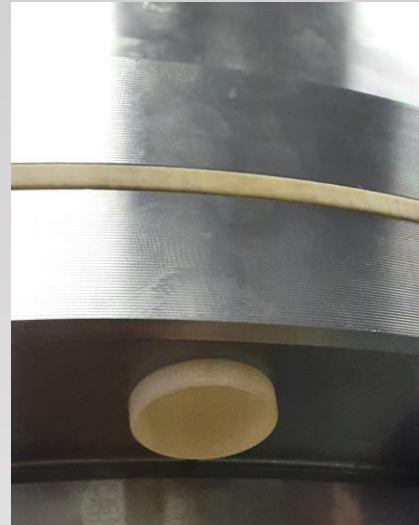
- Take care that the curvature of the Insulated nut covers matches the coupling flange.
- Make sure to tighten the screws at the indicated torque to avoid damaging the insulating components



Place the insulated interface in between the flanges



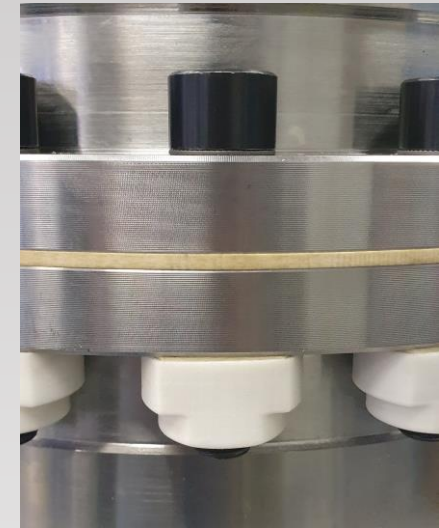
Align the holes of the flanges



Insert the insulated bushings within the holes of the special flange



Place the screws and washers on the standard flange side



Tightening, **two passes in a star pattern**

For the spare parts, please contact CMDgears and indicate the coupling model and size.
Identify each component in accordance with the parts list detailed previously



CMDgears contact