



GEAR COUPLING

# Senior AGMA<sup>®</sup>

STANDARD SIZES

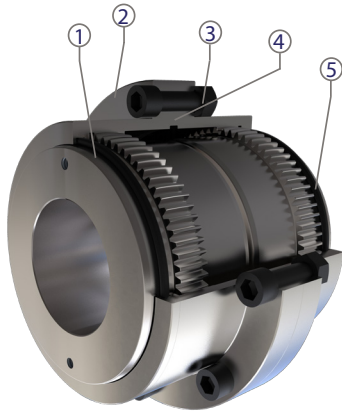


[www.cmd-couplings.com](http://www.cmd-couplings.com)





# Dimensions

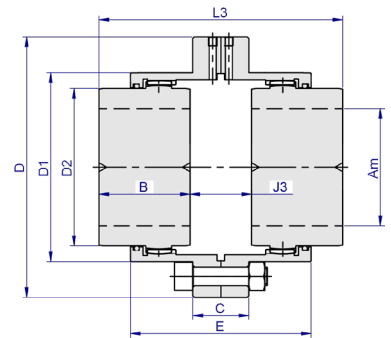
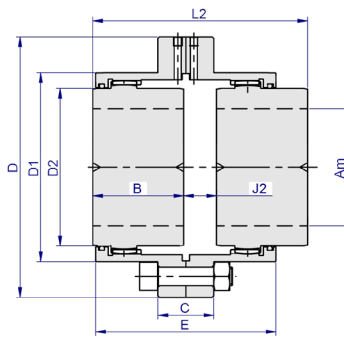
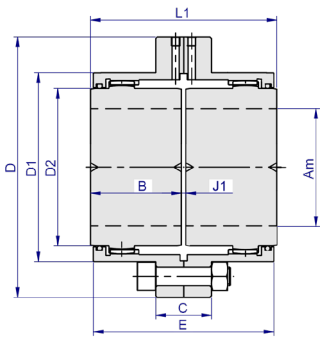


Item	Designation
1	Gear hub
2	Gear Sleeve
3	Bolts & Nuts
4	Gasket
5	Seal

Configuration 1

Configuration 2

Configuration 3



Typical designation :  
SA20-1 = flexident® senior standard Agma 2 configuration 1

Typical designation :  
SA20-2 = flexident® senior standard Agma 2 configuration 2

Typical designation :  
SA20-3 = flexident® senior standard Agma 2 configuration 3

SENIOR TYPE		SA10	SA15	SA20	SA25	SA30	SA35	SA40	SA45	SA50	SA55	SA60	SA70
Nominal Torque	Nm	1200	2840	4970	8500	13100	20100	29200	43000	60700	81200	101700	138000
Max bore	Am	50	64	76	94	110	128	150	170	190	199	225	250
	B	43	50	62	76	90	105	120	135	150	175	190	220
	C	28.6	38	38	44	44	54	54	54	76	76	50	56
	D	116	152	178	213	240	279	318	346	389	425	457	527
	D1	84	108	129	156	182	211	249	275	308	333	365	424
	D2	69	91	108	132	154	181	209	238	263	286	314	349
	E	89	100	123	148	175	206	228	254	280	323	344	403
	J1	3	3	3	5	5	6	6	8	8	8	8	10
	J2	17	17	23	27	29	35	38	44	48	59	58	76
	J3	31	31	42	49	53	64	70	80	88	110	108	142
	L1	89	103	127	157	185	216	246	278	308	358	388	450
	L2	103	117	147	179	209	245	278	314	348	409	438	516
L3	117	131	166	201	233	274	310	350	388	460	488	582	
Weight*	Kg	4.4	9.2	15	26	40	64	96	129	184	247	301	473
Moment of inertia*	kgm <sup>2</sup>	0.006	0.021	0.045	0.11	0.21	0.46	0.89	1.4	2.6	4	5.3	11.4
Max speed	rpm	5400	4000	3400	2700	2400	2000	1800	1600	1500	1300	1200	1100
	rpm**	14000	10500	8900	7200	6300	5400	4800	4200	3800	3300	3100	2900
Lube weight	kg	0.06	0.11	0.17	0.35	0.50	0.79	1.1	1.4	2.2	3	3.9	5.3

▽ Per coupling + Complete coupling configuration 1

dimensions (in mm) are given for reference and can be modified without notice

\* Complete couplings, hubs considered without any bore  
\*\* Dynamically balanced



For any QUERY or request for QUOTATION :  
**contact@fcmdna.com**